



Welcome to the Employment New Zealand newsletter. Here you will find the latest news and information about employment rights and responsibilities.



Update on Fair Pay Agreements

On 27 March, the first proposed Fair Pay Agreement (FPA) application to initiate bargaining was approved by MBIE.

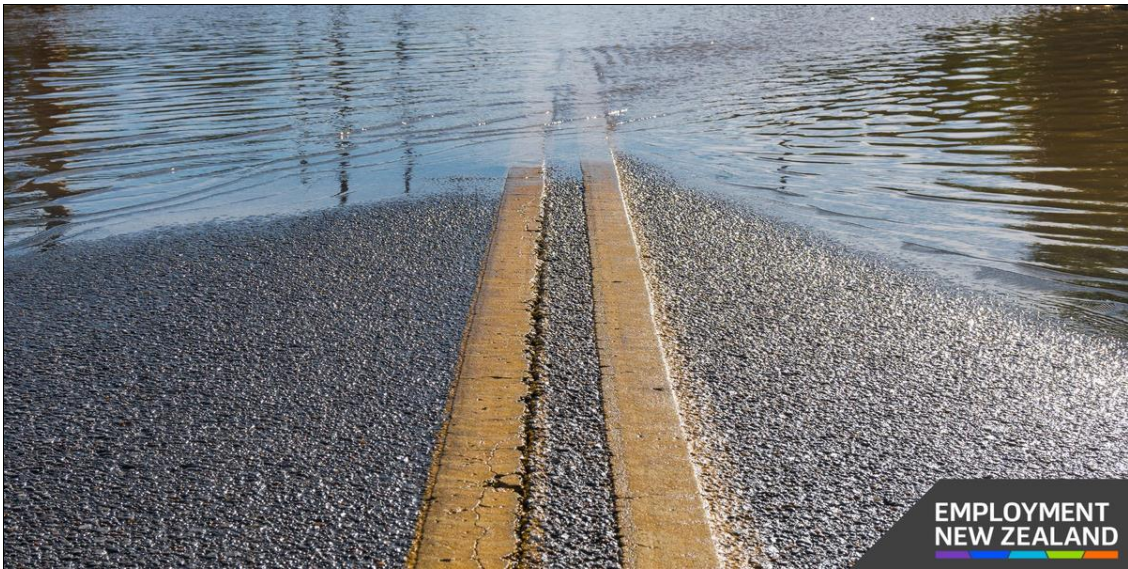
The application covers bus and coach drivers as well as cleaners working in the interurban, rural and urban bus transport industry. The initiating union is First Union Incorporated.

Read more about the industry and occupations covered by the proposed agreement:

[Public Notice of Approval of Application \(PDF 248 KB\)](#)

In the Fair Pay Agreements Dashboard you will find the FPA applications received by MBIE. It has information about the proposed coverage, the name of the initiating union, the bargaining parties approved and their contact details.

[FPA DASHBOARD](#)



EMPLOYMENT
NEW ZEALAND

Need help recovering from the floods?

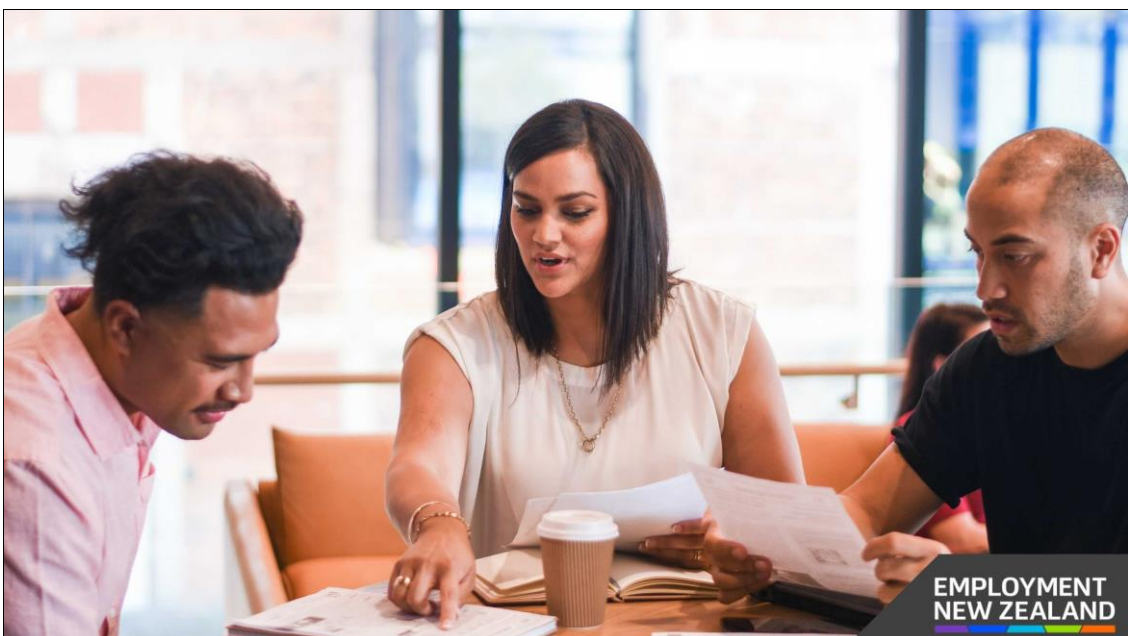
If you're an employer or employee recovering from the recent extreme weather events, information and guidance is available on the Employment New Zealand website, and from our colleagues at [business.govt](https://business.govt.nz) and Work and Income.

There's advice on pay and leave during and after disasters, resolving workplace issues, operating safely, making insurance claims, financial support, and what to do if you've lost your job.

[Floods: Employment guidance and support](#) — Employment New Zealand

[You're not working](#) — Work and Income

[Extreme weather: Information for businesses](#) — [Business.govt.nz](https://business.govt.nz)



EMPLOYMENT
NEW ZEALAND

Can't resolve a workplace problem? We can help

MBIE's early resolution service is a free phone-based service to help you quickly resolve workplace problems early. Our service is confidential and impartial – we don't take sides, we offer quality support to help you resolve problems before they escalate.

EARLY RESOLUTION



Holiday and shop trading rules this Easter and ANZAC

If your business is planning to open over the Easter and ANZAC public holidays, you need to check you're paying your employees correctly.

If your business is a shop, you also need to check if you're allowed to trade. Shops must be closed by law on Christmas Day, Good Friday, Easter Sunday and until 1:00pm on ANZAC Day, unless you are exempt under local council rules.

EMPLOYER OBLIGATIONS



The Minimum Wage is rising this weekend – are you ready?

If you're a business owner or employer you need to be ready for the increases to the Minimum Wage coming into effect from this Saturday 1 April.

MINIMUM WAGE INCREASE



[Facebook](#)



[LinkedIn](#)



[Website](#)

Employment New Zealand

[About us](#) | [Contact us](#) | [Privacy Policy](#) | [Disclaimer](#) | [Copyright](#)



MINISTRY OF BUSINESS,
INNOVATION & EMPLOYMENT
HĪKINA WHAKATUTUKI

[New Zealand Government](#)