



**Demonstrate knowledge of Cork flooring products**

# What is a Cork flooring product?

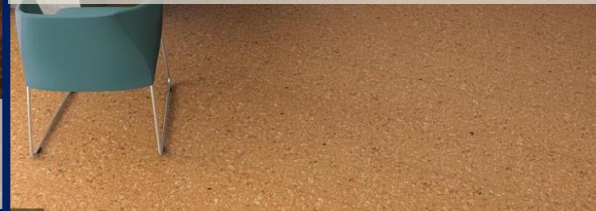
There are lots of different cork products made for floor coverings



Natural cork sanded & coated



Pre finished bevelled natural cork



Wood visual planks with a cork core



Colour coated cork



Low density cork underlay



Floating Engineered cork flooring

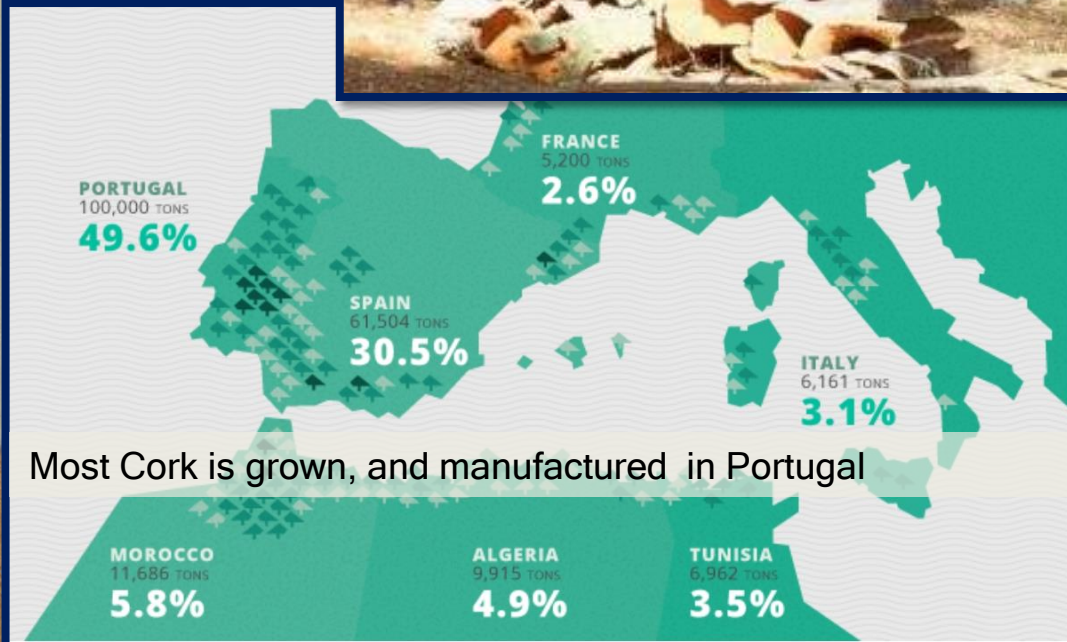


Natural Cork is a renewable resource harvested from the living bark of the Cork Oak, *Quercus Suber L.*

Cork is harvested in a steady cycle that promotes healthy growth to the tree over its expected lifespan of over 200 years



Cork flooring is made from the waste of wine stoppers



Most Cork is grown, and manufactured in Portugal



# Benefits of cork flooring

Natural Cork can be sanded & coated



**Insulating:** The air pockets in cork flooring slow the transfer of heat

Colour cork can be recoated, there is lots of colour choice



**Acoustics:** With Low density cork the air pockets in cork reduce the transfer of sound and vibration.



Pre finished bevelled natural cork is fast to install. It can be completed in a day



Floating engineered cork flooring on a timber core allows a stable loose lay system



Wood visual planks with a cork core can give softness to a timber look floor





Exposed to the Sun

# Limitations of cork flooring

Cork fades when exposed to the sun

Moisture cure coating  
(Aromatic)  
The coating yellows

Moisture Cure coatings are hazardous

- Coatings take longer to dry; job takes longer
- The customer has to shift out of the house

Moisture cure coating

Raw cork section exposed

Waterborne coating  
Non yellowing  
(aliphatic)  
The coating stays clear

Raw cork section not exposed

Waterborne coating

Complete Task 1

Not exposed to the sun



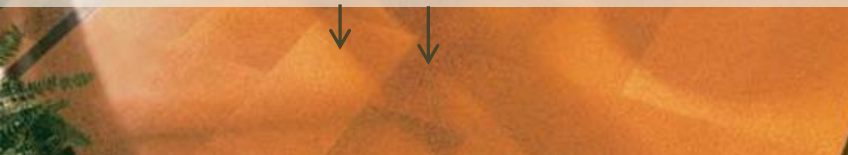
# Making cork



Cork is compressed and baked like a cake



Because of the baking process, cork tiles vary in shading. The same batch must be used, the tiles shuffled to mix up the shadings and care taken when placing the tiles to avoid too bigger contrast





# Finishing cork onsite

Prefinished cork has been coated in the factory  
After installation a coat or 2 coats of polyurethane are applied

Complete Task 2



Natural cork is sanded after installation and  
four coats of polyurethane applied





# Cork Density

High density cork has a high amount cork particles compressed together making it suitable as a stable, long lasting and durable floor covering



Low density cork has a lower amount cork particles compressed together making it suitable as an underlay or where sound needs to be absorbed



Complete Task 3