



Welcome to the Employment New Zealand newsletter. Here you will find the latest news and information about employment rights and responsibilities.



Bullying and harassment in the workplace

Bullying at work is a serious health and safety issue, and can happen not just between employers and employees, but also among co-workers, contractors, customers, clients or visitors.

Check out our guidance on steps to prevent bullying in the workplace and to respond to any matters that come up.

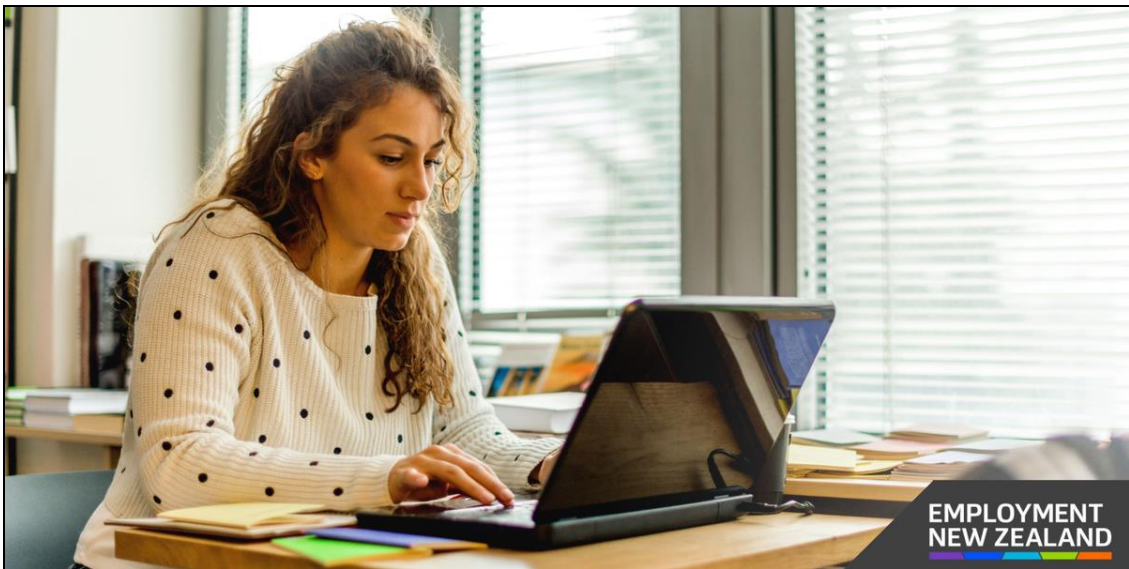
[Addressing bullying at work](#)

What to do if bullying complaints are not resolved

You can get help from us through our early resolution or mediation services to try and resolve the issue. Our services are free.

[Early Resolution](#)

[**How to request mediation**](#)



Learn more about employment rights

Do you want to know more about your employment rights and obligations? Check out our interactive online learning modules with quizzes to help you learn more about the key employment laws that affect you. We have modules for employers or employees. It's free!

[Employment NZ Learning Modules](#)



Bereavement leave

Did you know that many employees are entitled to bereavement leave by law? Bereavement leave gives an employee time to grieve and take care of matters when they suffer a bereavement from the death of a loved one or friend. This leave can be taken at any time and for any purpose relating to the bereavement.

[Bereavement leave entitlement](#)



Changes to working holiday visas

Do you employ people on working holiday visas? The Government has made changes to extend visas for some Working Holidays Scheme visa holders who are currently in New Zealand, to help meet workforce shortages. There are also changes to expand the Spain Working Holiday scheme.

Changes to Working Holiday Scheme



[Facebook](#) [LinkedIn](#) [Website](#)

Employment New Zealand

[About us](#) | [Contact us](#) | [Privacy Policy](#) | [Disclaimer](#) | [Copyright](#)



MINISTRY OF BUSINESS,
INNOVATION & EMPLOYMENT
HIKINA WHAKATUTUKI

[New Zealand Government](#)